



# PIPELAYERS

RL 26 · RL 46 · RL 56 · RL 66 LITRONIC®



# INDEX

## PIPELAYERS SERIES 6

Pipelayers	Page 3
Performance	Page 4
Reliability	Page 6
Safety	Page 8
Economy	Page 10
Technical specifications	
Base machine RL 26	Page 12
Dimensions and weights RL 26	Page 13
Transport dimensions and weights RL 26	Page 15
Base machine RL 46-56-66	Page 16
Dimensions and weights RL 46-56-66	Page 17
Transport dimensions and weights RL 46-56-66	Page 19
Lift capacity and ground pressure	
RL 26 Litronic®	Page 20
RL 46 Litronic®	Page 21
RL 56 Litronic®	Page 22
RL 66 Litronic®	Page 23
Equipment RL 26	Page 24
Equipment RL 46-56-66	Page 25





## PIPELAYERS

	ENGINE OUTPUT	MAX. LIFT CAPACITY
<b>RL 26</b>	93 kW / 126 HP	27,500 KG 60,627 LB
<b>RL 46</b>	175 kW / 238 HP	46,700 KG 102,956 LB
<b>RL 56</b>	210 kW / 286 HP	72,000 KG 158,733 LB
<b>RL 66</b>	275 kW / 374 HP	98,100 KG 216,273 LB

## ABOUT US

For nearly 40 years, Maats has been one of the leading suppliers of pipeline construction equipment and services to the pipeline industry and has a large fleet of equipment available for rental and for sale. Maats supply a wide variety of specialised construction machinery such as pipelayers, welding tractors, bending machines and related equipment for new pipeline construction as well as for pipeline maintenance and repairs.

Maats is the global representative for the sale of new Liebherr pipelayers. Liebherr and Maats developed a range of pipelayers with lifting capacities ranging from 20 tons up to over 90 tons.

# PERFORMANCE

Pipeline construction places the highest demands on production output and machine versatility – particularly under extreme conditions. Maats and Liebherr pipelayers are specially designed for use in challenging terrain. They combine a powerful stepless drive with the best manoeuvrability and maximum stability as well as maximum lifting power with precise control.

## POWERFUL DRIVE

Liebherr diesel engines deliver sufficient power in every situation. Depending on requirements, operating modes are available for maximum performance or particularly fuel-efficient operation. The stepless hydrostatic drive operates automatically and adjusts the working speed to the required traction.

## PRECISE CONTROL

The special boom concept stabilises heavy loads in any position. With the load sensing hydraulic control, the joystick movements are sensitively and precisely converted into the corresponding working movements.

## STABLE IN ANY TERRAIN

The layout of the drive components results in a very low centre of gravity while maximizing ground clearance. The continuous, smooth drive and boom control via a lift cylinder prevent the boom from swinging up. This makes Maats and Liebherr pipelayers ideal for driving on steep terrain or for embankment work.

## OUTSTANDING MANOEUVRABILITY

When working in confined spaces, the hydrostatic drive demonstrates another strength: all steering movements are quick and easy to make, even turning on the spot. In conjunction with the boom, the heaviest of pipes can be easily swung to the side even on damp and difficult ground.

## EXTENSIVE RANGE OF EQUIPMENT VERSIONS

A variety of boom lengths is available for all types of Liebherr pipelayers. These enable even larger work areas to be covered. In addition to an optional extended drawbar, hydrostatic cable winches can be fitted to the rear of the main frame. It is also possible to operate generators and use pipe facing machines and telescopic cranes, easy to connect by using the hydraulic PTO. This increases the versatility of the machine on the construction site.



**MAATS AND LIEBHERR  
PIPELAYERS WILL  
IMPRESS YOU WITH  
THEIR OUTSTANDING  
PERFORMANCE  
CAPABILITIES.**







## HIGHLIGHTS PERFORMANCE

---

POWERFUL AND STEPLESS TRAVEL DRIVE

---

HIGH STABILITY

---

HIGH LIFTING CAPACITIES

---

LATEST TECHNOLOGY

---

EXCELLENT MANOEUVRABILITY

---

EXTRA LONG UNDERCARRIAGE

---

LONG BOOM



# RELIABILITY

## MAATS & LIEBHERR QUALITY

The Maats and Liebherr pipelayers' mature technology, innovative attention to detail and high-quality materials and workmanship together ensure maximum operational availability. This applies to their day-to-day operation in the toughest and in all weather conditions as well as in terms of long service life.

### KEY TECHNOLOGIES DEVELOPED IN-HOUSE

Based on decades of experience in the development, design and manufacture of components, Maats and Liebherr offer maximum reliability. Key components such as diesel engines, transfer boxes, hydraulic pumps and cylinders, final drives and electronics are manufactured in-house and their compatibility is therefore optimised.

### TORSIONALLY RIGID MAIN FRAME

Through use of the highest grades of steel and box construction, the forces applied to the frame are perfectly absorbed. This allows the main frame to withstand the highest continuous load.



**MAATS AND  
LIEBHERR QUALITY  
ENSURES MAXIMUM  
RELIABILITY EVEN  
UNDER THE HARSHTEST  
CONDITIONS.**

### WEAR-FREE DRIVE CONCEPT

The proven hydrostatic drive system does not make use of torque converters, manual transmissions, differential steering or steering clutches. The high-quality hydraulic pumps and engines operate almost entirely without mechanical wear and are particularly safe in operation. The large dimension final drives are also extremely robust and have heavy duty duo cone seals with leakage control.

### DURABLE ENGINES

Liebherr diesel engines guarantee maximum operational security. Demand controlled, hydraulically driven cooling fans regulate the operating temperature independently of the engine speed. Shorter warm-up phases and reliable cooling are guaranteed, even in dust intensive applications. An air prefilter or a reversible fan can be used for particularly critical environmental conditions.

### ALWAYS OPERATIONALLY READY EVEN AT -40 °C

Maats and Liebherr pipelayers can be equipped with a variety of cold protection measures for operation down to -40 °C: Engine and battery preheating, electrically heated fuel prefilter, auxiliary cabin heating, insulating glazing and other cold-resistant components.

### PRACTICAL ADVICE FOR PRACTICAL OPERATION

In every situation, Maats and Liebherr customer service offers fast solutions to problems and practical assistance in making decisions. This applies to service agreements as well as to repair options or original parts management.





## HIGHLIGHTS RELIABILITY

---

TORSION – RESISTANT MAIN FRAME

---

KEY TECHNOLOGIES FROM LIEBHERR

---

ENDURANCE TESTED COMPONENTS

---

STATE- OF –THE- ART COOLING SYSTEM

---

MILLIMETRE ACCURATE CONTROL OF BOOM

---

WORK UNDER HARSH WEATHER CONDITIONS

---

POWERFUL HYDRAULIC CYLINDERS



# SAFETY

All Maats and Liebherr pipelayers are based on an advanced safety concept that sets the standard in pipeline construction. Safety functions are in place for every critical situation, whether that be cabin rollover protection, parking brake, hoist limit shutoff, free fall device or load moment limitation, to name a few.

## CABIN WITH INTEGRATED ROPS

When it comes to safety, the driver's cabin meets the highest standards. It is equipped with integrated ROPS and roof windows made of laminated safety glass as standard. This ensures full visibility with maximum protection. As an option, a FOPS grille is available.

## SAFETY IS BUILT INTO THE DETAIL

Access to the cabin is through a series of non-slip foot rails and grab handles. The seat contact switch detects whether the driver is present and activates or deactivates the machine accordingly. A panorama mirror inside or additional external rear-view mirrors assist the driver in reversing. Individually adjustable headlamps guarantee excellent illumination of the entire working area even at night in multi-shift operation.

## ALWAYS BALANCED

All movements of the machine can be controlled without having to transfer grip to other operating levers. The counterweight can be extended at any time using its own adjustment lever. In a dangerous situation, the free fall function prevents the pipelayer from tipping over.

## PROTECTION IN THE WORKING ENVIRONMENT

It is possible to equip the machines with an amber beacon, rear view camera, back-up alarm or with a 270° camera. In addition, all pipelayers have a hydraulic hose burst valve, which prevents the boom from dropping in the event of an emergency.

## PREVENTING DAMAGE TO MATERIALS

Robust rubber strips are bolted to the boom and protect the pipes being laid from damage. When raising the hook block, an automatic shutdown occurs shortly before the counter roll stop. This hoist limit shutoff prevents damage to materials during day-to-day work.

## LIFTING CYLINDER FOR GREATER SAFETY

The boom concept incorporates a lifting cylinder that provides several advantages related to safety. Firstly, in extreme cases, it prevents unwanted collapse and consequently complete tilting of the pipelayer. Secondly, the lifting cylinder holds the boom in a stable position with each movement and allows a faster response – for example, when driving under power lines.



**SAFETY IS PRIORITY  
AT MAATS, WHICH IS  
WHY ALL PIPELAYERS  
ARE BASED ON A WELL-  
THOUGHT-OUT SAFETY  
CONCEPT THAT SETS  
STANDARDS IN PIPELINE  
CONSTRUCTION.**







## HIGHLIGHTS SAFETY

---

SAFE ACCESS TO THE CABIN

---

NON-SLIP STEPS

---

PIPE PROTECTION ON THE BOOM (OPTION)

---

NUMEROUS HANDHOLDS ON THE MACHINE

---

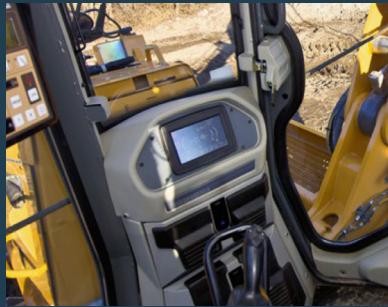
AUTOMATIC LIFT KICK OUT

---

OVERLOAD WARNING DEVICE

---

WELL-THOUGHT-OUT LIGHTING CONCEPT



# ECONOMY

Clear economic benefits - the Maats and Liebherr advantage: Like all other Maats and Liebherr equipment, these pipelayers are characterised by their service friendliness. This reduces both downtime and maintenance costs. The Liebherr diesel engines combine high performance and economy - the combination of an efficient drive system and load-sensing hydraulics guarantees minimum fuel consumption.

## LOW SERVICE COSTS

Maximum accessibility to all maintenance points.

All service points on the diesel engine are centralised, easily accessible on one side of the machine. Separate compartments for batteries, electronics and on-board tools offer the best protection, while providing easy and quick access.

## UNMATCHED OIL CHANGE INTERVALS

Liebherr oils and lubricants are specially formulated to harsh operating conditions of pipelayers. Because of the special properties of these oils, achievable oil change intervals can be as much as four times longer than those for conventional oils. This reduces the amount of services required, oil used and protects the environment.

**SPECIAL ATTENTION  
IS DEVOTED TO  
ENSURING LONG  
COMPONENT SERVICE  
LIFES, LOW SERVICE  
COSTS AND LOW FUEL  
CONSUMPTION.**

## LOW FUEL CONSUMPTION

The Liebherr diesel engine runs at a constant low speed in an economical range. The result is exceptionally low fuel consumption.

## ECONOMICAL HYDRAULICS

The load-sensing on-demand controls supply only the exact amount of oil needed. This protects the components and saves fuel.

## INNOVATIVE COOLING SYSTEM

The hydrostatic powered fan regulates the cooling capacity to meet requirements, regardless of the diesel engine speed. This ensures optimal cooling capacity and saves fuel.

## COMPONENTS AND SPARE PARTS LOGISTICS

The main components of Maats and Liebherr pipelayers are identical to those used in the crawler tractors, greatly simplifying maintenance and repair as well as spare parts supply.

## TILTING OPERATOR CAB

The standard tilting operator cab provides fast and easy access to all important components of the travel drive and hydraulics.







## HIGHLIGHTS ECONOMY

---

LONG COMPONENT SERVICE LIFE

---

LOW SERVICES COSTS

---

WIDE-OPENING ENGINE COMPARTMENT

---

DOORS PROVIDE EASY ACCESS

---

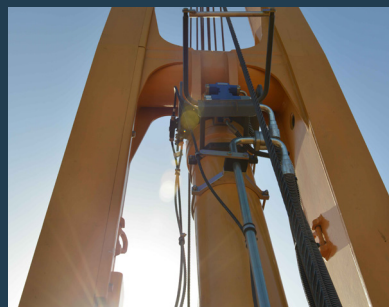
PROTECTED COMPONENTS

---

EXCEPTIONALLY LOW FUEL CONSUMPTION

---

TILTING OPERATOR CAB PROVIDES FAST  
AND EASY ACCESS



# BASE MACHINE

RL 26



## ENGINE

RL 26

Liebherr Diesel engine	D 924 A7 Emission regulations according to 97/68/EC, 2004/26/EC Stage IV, EPA/CARB Tier 4f
Rated power (ISO9249)	93 kW / 126 HP (net)
Rated power (SAE J1349)	93 kW / 125 HP (net)
Rated speed	2,100 rpm
Displacement	4,5 l / 274,6 cu.in.
Design	4-cylinder-in-line engine, water cooled, turbocharged, air-to-air intercooler
Injection system	Direct fuel injection, Common Rail, electronic control
Lubrication	Pressurized lube system, engine lubrication guaranteed for inclinations up to 35 degrees, on all sides
Operating voltage	24 V
Alternator	140 A
Starter	5,5 kW / 7 HP
Batteries	2 x 100 Ah / 12V
Air cleaner	Dry-type air cleaner with pre-cleaner, main and safety elements, control light in the operator's cabin.
Cooling system	Combi radiator, comprising radiators for water, hydraulic fluid and charge air. Hydrostatic fan drive



## REFILL CAPACITIES

RL 26

Fuel tank	320 l/84,5 gal
Diesel Exhaust Fluid (DEF) tank	50 l/13.2 gal
Cooling system	24 l/6.3 gal
Engine oil with filters	19 l/5 gal
Hydraulic tank	101 l/26.7 gal
Final drive LGP, each side	7,5 l/2 gal



## OPERATOR'S CABIN

RL 26

Cabin	Resiliently mounted cabin with positive pressure ventilation, can be tilted with hand pump 40° to the rear. With integrated ROPS Rollover Protective Structure (EN ISO 3471)
Operator's seat Monitoring	Air-suspended comfort seat, fully adjustable Touch screen: display of current machine information, automatic monitoring of operating conditions. Individual setting of machine parameters



## TRAVEL DRIVE, CONTROL

RL 26

Transmission system	Infinitely variable hydrostatic travel drive, independent drive for each track
Travel speed*	Continuously variable
- Speed range 1 (reverse)	0 - 4,0 km/h / 2.5 mph (4,5 km/h / 2.8 mph)
- Speed range 2 (reverse)	0 - 6,0 km/h / 3.7 mph (8,0 km/h / 4.9 mph)
- Speed range 3 (reverse)	0 - 10,0 km/h / 6.2 mph (10,0 km/h / 6.2 mph)
	* Travel speed ranges can be set on the travel joystick (memory function)
Electronic control	The electronic system automatically adjusts travel speed and drawbar pull to match changing load conditions.
Steering	Hydrostatic
Service brake	Hydrostatic (self-locking), wear free
Parking brake	Multi-disk brake, wear free, automatically applied with neutral joystick position
Cooling system	Hydraulic oil cooler integrated in combi radiator, hydrostatic fan drive
Filter system	Micro cartridge filters in replenishing circuit
Final drive	Combination spur gear with planetary gear
Control	Single joystick for all travel and steering functions, Optional detented Joystick, with inching pedal



## HYDRAULIC WINCH

RL 26

Hoist winch	Variable flow hydraulic pump
Safety brake	Spring-loaded disc brake holds the load safely in any position
Drum diameter	248 mm / 9.75"
Drum length	349 mm / 13.75"
Flange diameter	416 mm / 16.38"
Cable diameter	16 mm / 0.63"
Cable length	55 m / 60.15 yd
Hook block	2 sheaves - 4 strand
Hook speed (up, down)	0-33 m/min 0-108 ft/min
Security	Free fall device



## HYDRAULIC SYSTEM

RL 26

Hydraulic system	Load sensing (demand controlled)
Pump type	Swash plate piston pump
Pump flow max.	155 l/min 34.1 gpm
Pressure limitation	315 bar / 4,568 PSI
Control valve	3 segments, expandable to 6
Filter system	Return filter with magnetic rod in the hydraulic tank
Control	Single joystick for hoist winch and adjustable boom cylinder, free fall device of hook in case of danger. Further single joystick for counterweight.



## UNDERCARRIAGE

RL 26

Design	Undercarriage with rigid bottom rollers
Mount	Via separate pivot shafts and fixed equalizer bar
Tracking chains	Lubricated, single grouser shoes; tensioning via steel spring and grease tensioner
Links, each side	47
Track rollers, each side	10
Carrier rollers, each side	2 (2")
Sprocket segments, each side	5
Track shoes standard	762 mm / 30"



# BASE MACHINE

RL 26



## DRAWBAR PULL

RL 26

Max.	215 kN
at 1,5 km/h / 0.9 mph	190 kN
at 3,0 km/h / 1.9 mph	96 kN
at 5,0 km/h / 3.7 mph	49 kN
at 9,0 km/h / 5.6 mph	32 kN



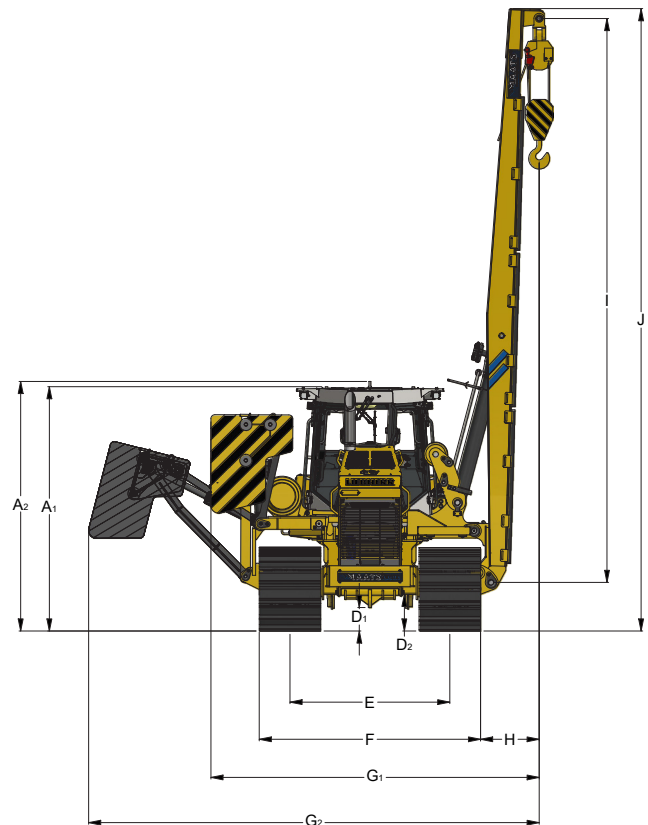
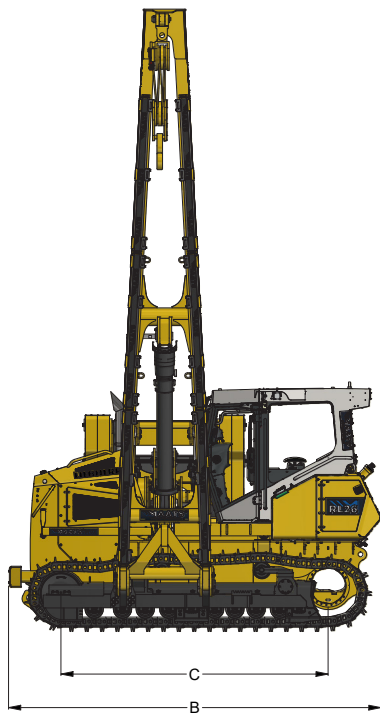
## SOUND LEVELS

RL 26

Operator sound exposure (ISO 6396)	$L_{PA}$ (in the cab) = 75 dB(A)
Exterior sound pressure (2000/14/EC)	$L_{WA}$ (to the environment) = 109 dB(A)

# DIMENSIONS AND WEIGHTS

RL 26



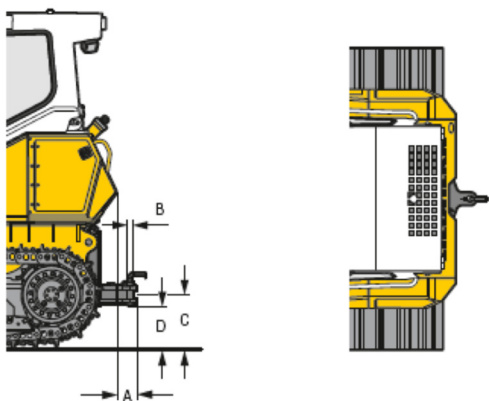
## DIMENSIONS

RL 26

A <sub>1</sub>	Height over cab	mm/ft-in	3.027	/ 10'0"
A <sub>2</sub>	Height over cab with beacon	mm/ft-in	3.091	/ 10'2"
B	Overall length	mm/ft-in	4.612	/ 15'2"
C	Length of track on ground	mm/ft-in	3.310	/ 10'11"
D <sub>1</sub>	Ground clearance front tow hook	mm/ft-in	290	/ 11,4"
D <sub>2</sub>	Ground clearance	mm/ft-in	453	/ 1'6"
E	Track gauge	mm/ft-in	1.980	/ 6'6"
F	Total width over undercarriage	mm/ft-in	2.742	/ 9'0"
G <sub>1</sub>	Width (counterweight retracted)	mm/ft-in	4.067	/ 13'4"
G <sub>2</sub>	Width (counterweight extended)	mm/ft-in	5.582	/ 18'4"
H	Distance (edge of chain link to hook)	mm/ft-in	726	/ 2'6"
I	Boom length	mm/ft-in	6.985	/ 22'11"
J	Total height	mm/ft-in	7.710	/ 25'4"
Operating weight		kg/lb	23.500	/ 51367
Counterweight		kg/lb	4.320	/ 9524
Boom weight (with protection strips)		kg/lb	1.450	/ 3197
Boom weight (without protection strips)		kg/lb	1.380	/ 3042

# DIMENSIONS AND WEIGHTS

RL 26



## DRAWBAR, RIGID

RL 26

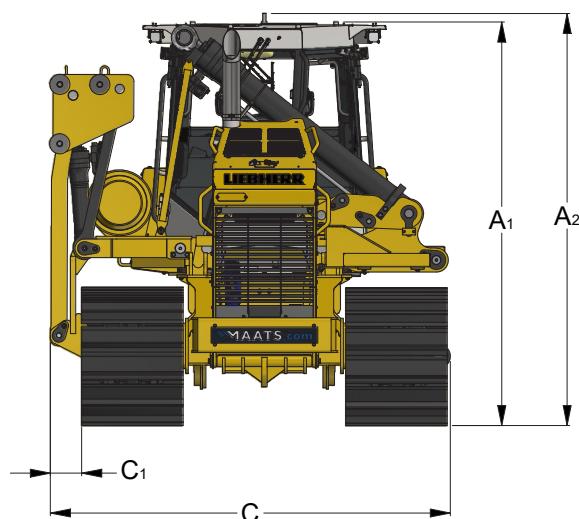
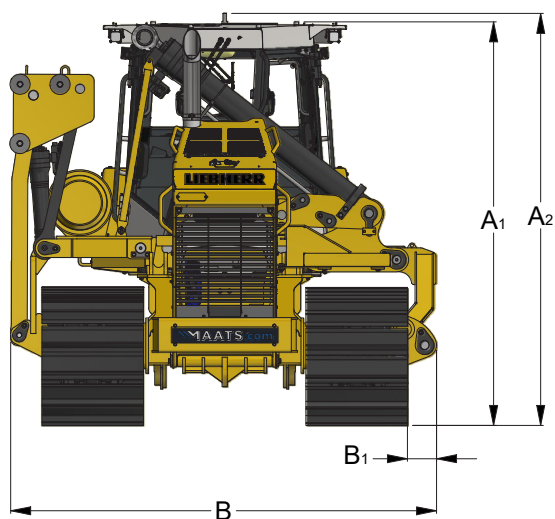
A	Additional length	mm/ft-in	172	/ 6.77"
B	Socket pin diameter	mm/ft-in	44.5	/ 1.75"
C	Height of jaw	mm/ft-in	424	/ 1'5"
D	Ground clearance	mm/ft-in	329	/ 11"
Jaw opening		mm/ft-in	90	/ 3.54"
Weight		kg/lb	157	/ 346





## TRANSPORT DIMENSIONS AND WEIGHTS

RL 26



## TRANSPORT DIMENSIONS, DISPLAYED POSITION

### RL 26

A <sub>1</sub>	Height over cabin	mm/ft-in	3.027 / 9'11"
A <sub>2</sub>	Height over cabin with beacon	mm/ft-in	3.091 / 10'2"
B	Overall width	mm/ft-in	3.196 / 10'6"
B <sub>1</sub>	Width (from console to right track)	mm/ft-in	219 / 8,63"
	Transport weight with A-frame	kg/lb	17.730 / 39088
C	Overall width	mm/ft-in	3.000 / 9'11"
C <sub>1</sub>	Width (from console to left track)	mm/in	235 / 9,25"
	Transport weight without A-frame	kg/lb	17.450 / 38471



# BASE MACHINE

RL 46 - RL 56 - RL 66



## ENGINE

	RL 46	RL 56	RL 66
Liebherr diesel engine	D 934 A7	D 936 A7	D 946 A7
	Emission regulations according to 97/68/EC, 2012/46/EU Stage IIIA/Stage IV, EPA/CARB Tier 3/Tier 4f		
Rated power (ISO 9249)	175 kW/238 HP	210 kW/286 HP	275 kW/374 HP
Rated power (SAE J1349)	175 kW/235 HP	210 kW/281 HP	275 kW/368 HP
Rated speed	1,900 rpm	1,800 rpm	1,800 rpm
Displacement	7.0 l / 427 in <sup>3</sup>	10.5 l / 641 in <sup>3</sup>	12 l / 733 in <sup>3</sup>
Design	4 cylinder in-line engine, water-cooled, turbocharged, air-to-air intercooler	6 cylinder in-line engine, water-cooled, turbocharged, air-to-air intercooler	6 cylinder in-line engine, water-cooled, turbocharged, air-to-air intercooler
Injection system	Direct fuel injection, common rail, electronic control		
Lubrication	Pressurised lube system, engine lubrication guaranteed for inclinations up to 45°		
Operating voltage	24 V	24 V	24 V
Alternator	140 A	140 A	140 A
Starter	7.8 kW / 11HP	7.8 kW / 11HP	7.8 kW / 11HP
Batteries	2 x 180 Ah/12 V	2 x 180 Ah/12 V	4 x 95 Ah/12 V
Air cleaner	Dry-type air cleaner with pre-cleaner, main and safety elements, control light in the operator's cab		
Cooling system	Combi radiator, comprising a radiator for water and charge air, hydrostatic fan drive		



## TRAVEL DRIVE, CONTROL

	RL 46	RL 56	RL 66
Transmission system	Infinitely variable hydrostatic travel drive, independent drive for each track		
Travel speed*	Continuously variable		
- Speed range 1 (reverse)	0 - 4.0 km/h 2.5 mph (4.5 km/h 2.8 mph)	0 - 4.0 km/h 2.5 mph (4.5 km/h 2.8 mph)	0 - 4.0 km/h 2.5 mph (4.8 km/h 3.0 mph)
- Speed range 2 (reverse)	0 - 6.0 km/h 3.7 mph (8.0 km/h 4.9 mph)	0 - 6.5 km/h 4.0 mph (8.0 km/h 4.9 mph)	0 - 6.5 km/h 4.0 mph (7.8 km/h 4.8 mph)
- Speed range 3 (reverse)	0 - 10.5 km/h 6.5 mph (10.5 km/h 6.5 mph)	0 - 10.5 km/h 6.5 mph (10.5 km/h 6.5 mph)	0 - 10.5 km/h 6.5 mph (10.5 km/h 6.5 mph)
	*Travel speed ranges can be set on the travel joystick (memory function)		
Electronic system	The electronic system automatically adjusts travel speed and drawbar pull to match changing load conditions		
Steering	Hydrostatic		
Service brake	Hydrostatic (self-locking), wear-free		
Parking brake	Multi-disc brake, wear-free, automatically applied with neutral joystick position		
Cooling system	Integrated oil cooler, hydrostatic fan drive and thermostatically controlled	Separate oil cooler, hydrostatic fan drive and thermostatically controlled	Separate oil cooler, hydrostatic fan drive and thermostatically controlled
Filter system	Micro cartridge filters in replenishing pressure circuit		
Final drive	Combination spur gear with planetary gear, double-sealed (duo cone seals) with electronic seal-integrity indicator		
Control	Single joystick for all travel and steering functions		



## HYDRAULIC SYSTEM

	RL 46	RL 56	RL 66
Hydraulic system	Load sensing (demand controlled)		
Pump type	Swash plate piston pump		
Pump flow max.	240 l/min 63.4 gpm	283 l/min 74.7 gpm	283 l/min 74.7 gpm
Pressure limitation	280 bar 4,060 PSI	280 bar 4,060 PSI	280 bar 4,060 PSI
Control valve	3 segments, expandable to 6		
Filter system	Return filter with magnetic rod in the hydraulic tank		
Control	Single joystick for hoist winch and adjustable boom cylinder, free fall device of hook in case of danger. Further single joystick for counterweight.		



## UNDERCARRIAGE

	RL 46	RL 56	RL 66
Design	Track frame, rigid		
Mounting	Separate pivot		
Track chains	Lubricated, single-grouser shoes, tensioning via steel spring and grease tensioner		
Links, each side	43	45	48
Track rollers, each side	8	9	9
Carrier rollers, each side	2	2	2
Sprocket segments, each side	5	5	5
Track shoes, standard	711 mm/28"	914 mm/36"	914 mm/36"
Track shoes left, optional	914 mm/36"		



## OPERATOR'S CAB

	RL 46	RL 56	RL 66
Cab	Resiliently mounted cab with positive pressure ventilation, can be tilted with hand pump 40° to the rear. With integrated ROPS Rollover Protective Structure (EN ISO 3471)		
Operator's seat	Air suspended comfort seat, fully adjustable		
Monitoring	Touch screen: display of current machine information, automatic monitoring of operating conditions, individual setting of machine parameters		



## HYDRAULIC WINCH

	RL 46	RL 56	RL 66
Hoist winch	Variable flow hydraulic pump		
Safety brake	Spring-loaded disk brake holds the load safely in any position		
Drum diameter	254 mm / 10"		
Drum length	279 mm / 10.98"		
Flange diameter	610 mm / 24.02"		
Cable diameter	20 mm / 0.8"		
Cable length	65 m / 213.25 ft	80 m/262.47 ft	100 m/ 328.08 ft
Hook block	2 sheaves	3 sheaves	4 sheaves
Hook speed (up, down)	0 - 30.5 m/min. 0 - 100 ft/min.	0 - 20.0 m/min. 0 - 66 ft/min.	0 - 16.0 m/min. 0 - 53 ft/min.
Security	Free fall device		



## DRAWBAR PULL

	RL 46	RL 56	RL 66
Max.	281 kN	387 kN	522 kN
at 1.5 km/h / 0.9 mph	281 kN	387 kN	522 kN
at 3.0 km/h / 1.9 mph	180 kN	216 kN	282 kN
at 6.0 km/h / 3.7 mph	90 kN	108 kN	141 kN
at 9.0 km/h / 5.6 mph	60 kN	72 kN	94 kN



# BASE MACHINE

RL 46 - RL 56 - RL 66



## SOUND LEVELS



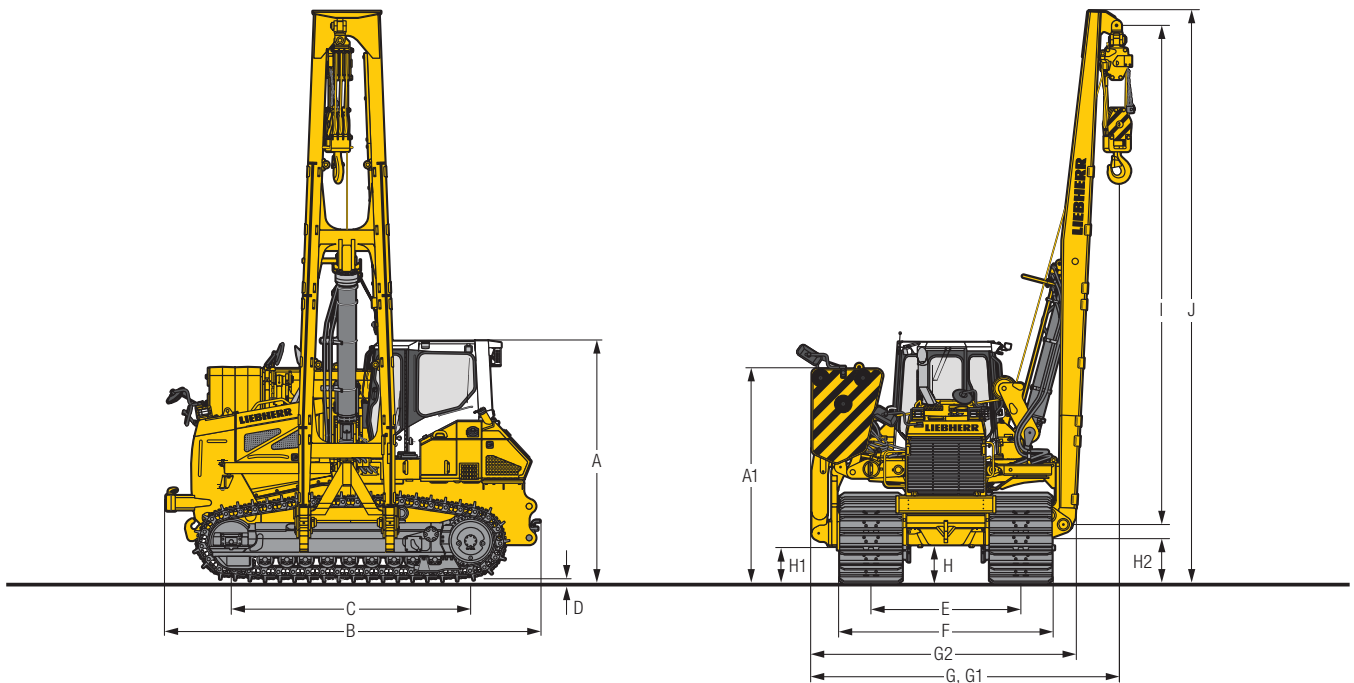
## REFILL CAPACITIES

	RL 46	RL 56	RL 66
Operator sound exposure ISO 6396	78 dB(A) L <sub>PA</sub> (in the cabin)	78 dB(A)	78 dB(A)
Exterior sound pressure 2000/14/EC	108 dB(A) L <sub>WA</sub> (to the environment)	108 dB(A)	108 dB(A)

	RL 46	RL 56	RL 66
DEF tank	50 l / 13.2 gal	56.5 l / 14.9 gal	80 l / 21.9 gal
Fuel tank	430 l / 113.5 gal	505 l / 133.3 gal	660 l / 174.2 gal
Cooling system	51 l / 13.5 gal	60 l / 15.08 gal	68 l / 18.0 gal
Engine oil, with filter	29 l / 7.7 gal	43 l / 11.4 gal	43 l / 11.4 gal
Splitter box	N/A	8.5 l / 2.2 gal	8.5 l / 2.2 gal
Hydraulic tank	111 l / 29.3 gal	112 l / 29.6 gal	129 l / 34.1 gal
Final drive, left	21 l / 5.5 gal	19.5 l / 5.1 gal	22 l / 5.8 gal
Final drive, right	14 l / 3.7 gal	19.5 l / 5.1 gal	22 l / 5.8 gal

# DIMENSIONS AND WEIGHTS

RL 46 - RL 56 - RL 66



## DIMENSIONS

RL 46

RL 56

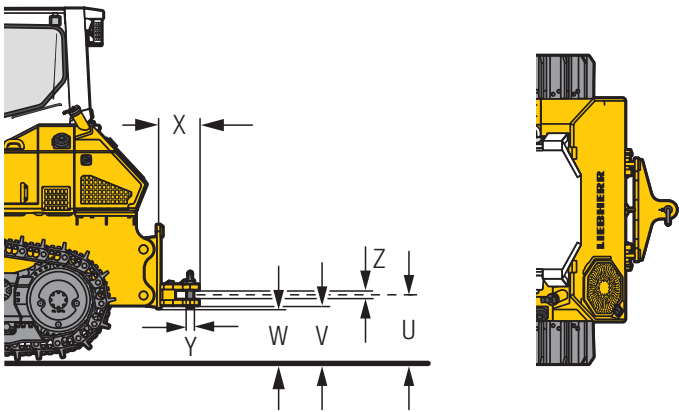
RL 66

		Standard 6.000 mm	Optional 7.320 mm	Standard 7.300 mm	Optional 8.500 mm	Standard 8.500 mm	Optional 10.500 mm
A	Height over cabin	mm/ft-in	3.365 / 11'0"		3.529 / 11'7"		3.700 / 12'2"
A1	Height over counterweight	mm/ft-in	2.876 / 9'5"		3.068 / 10'1"		3.543 / 11'7"
B	Overall length	mm/ft-in	5.146 / 16'11"		5.446 / 17'10"		5.795 / 19'0"
C	Length of track on ground	mm/ft-in	3.315 / 10'11"		3.504 / 11'6"		3.610 / 11'10"
D	Height of grousers	mm/in	72 / 2.8"		71 / 2.8"		84 / 3.3"
E	Track gauge	mm/ft-in	2.075 / 6'10"		2.180 / 7'2"		2.420 / 7'11"
F	Total width over undercarriage	mm/ft-in	2.786 / 9'2" <sup>1)</sup>		3.094 / 10'5"		3.348 / 11"
G	Width (counterweight retracted)	mm/ft-in	4.104 / 13'6"		4.450 / 14'7"		5.651 / 18'6"
G1	Width (counterweight extended)	mm/ft-in	5.783 / 19"		6.209 / 20'4"		7.291 / 23'11"
G2	Width (lower machine area, counterweight folded in)	mm/ft-in	3.565 / 11'8"		3.850 / 12'8"		4.245 / 13'11"
H	Ground clearance	mm/ft-in	534 / 1'9"		572 / 1'11"		640 / 2'1"
H1	Ground clearance of console	mm/ft-in	646 / 2'1"		651 / 2'2"		754 / 2'6"
H2	Ground clearance of boom	mm/ft-in	660 / 2'2"		548 / 1'10"		649 / 2'2"
I	Boom length	mm/ft-in	6.000 / 19'8"	7.320 / 24"	7.300 / 23'11"	8.500 / 27'11"	8.500 / 27'11"
J	Total height	mm/ft-in	6.999 / 23"	8.319 / 27'4"	8.281 / 27'2"	9.481 / 31'1"	9.515 / 31.3"
K	Distance (length of chain link to hook)	mm/ft-in	1.178 / 3'10"		1.200 / 3'11"		1.380 / 4'6"
	Operating weight	kg/lb	34.800/76,721	35.100/77,382	46.050/101,523	46.280/102,030	59.350/130,844
	Counterweight without frame	kg/lb	5.030 / 11,089		9.534 / 21,019		12.000 / 26,455
	Counterweight	kg/lb	7.222 / 15,922		12.730 / 28,065		15.985 / 35,241
	Weight of standard boom	kg/lb	1.710 / 3,770	1.975 / 4,354	2.264 / 4,991	2.497 / 5,505	3.305 / 7,286
							3.854 / 8,497

<sup>1)</sup> Track shoes with 914 mm / 36"; 2,887 mm / 9'6".

# DIMENSIONS AND WEIGHTS

RL 46 - RL 56 - RL 66



## DRAWBAR, RIGID

RL 46

RL 56

RL 66

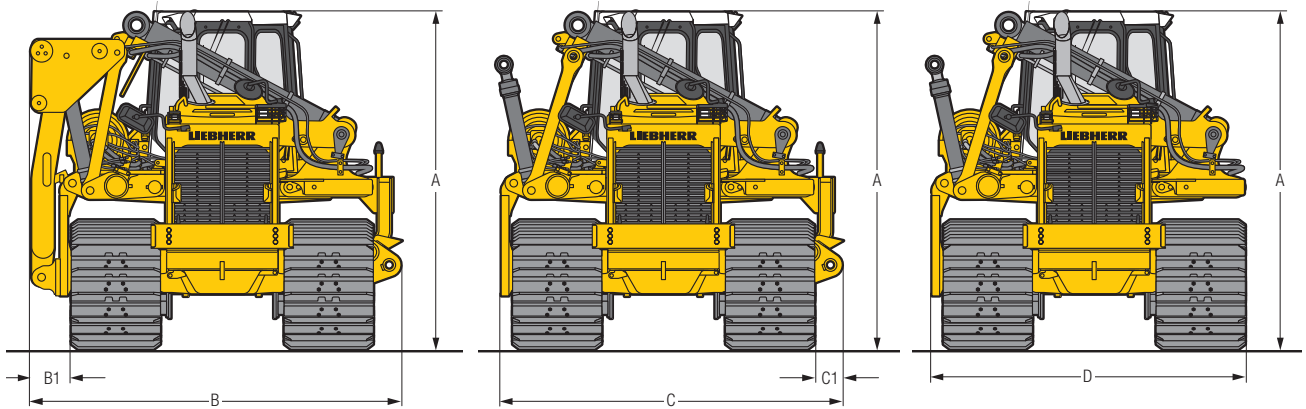
U	Height of drawbar	mm/ft-in	544 / 1'9"	576 / 1'11"	620 / 2'0"
V	Ground clearance below drawbar	mm/ft-in	456 / 1'6"	474 / 1'7"	517 / 1'8"
W	Ground clearance below drawbar suspension	mm/ft-in	431 / 1'5"	424 / 1'5"	467 / 1'6"
X	Overall length	mm/ft-in	400 / 1'4"	435 / 1'5"	455 / 1'6"
Y	Pin diameter	mm/in	50 / 1.97"	60 / 2.36"	60 / 2.36"
Z	Size of opening	mm/in	95 / 3.74"	105 / 4.13"	105 / 4.13"
Weight		kg/lb	253 / 558	460 / 1'6"	577 / 1,272





## TRANSPORT DIMENSIONS AND WEIGHTS

RL 46 - RL 56 - RL 66



## TRANSPORT DIMENSIONS, DISPLAYED POSITION

### RL 46

### RL 56

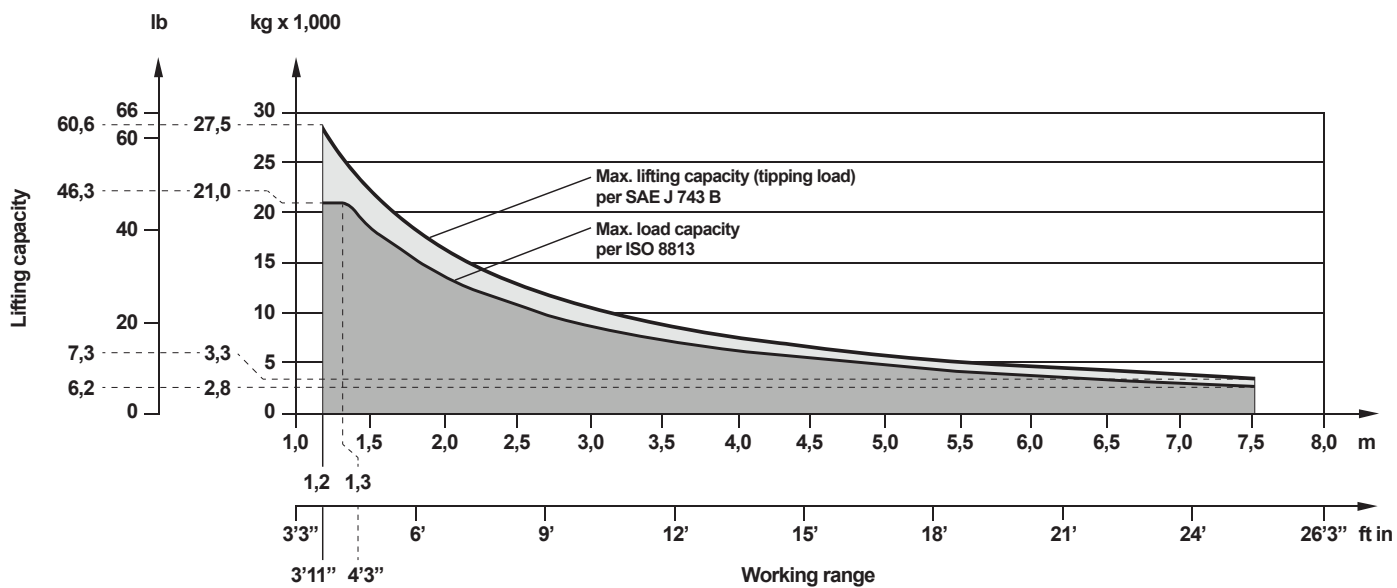
### RL 66

			RL 46	RL 56	RL 66
A	Total height	mm/ft-in	3.365 / 11'0"	3.529 / 11'7"	3.700 / 12'2"
B	Overall width	mm/ft-in	3.475 / 11'5" <sup>1)</sup>	3.785 / 12'5"	4.141 / 13'7"
B <sub>1</sub>	Width (from console to left track)	mm/ft-in	395 / 1'4"	406 / 1'4"	481 / 1'7"
	Weight	kg/lb	27.898 / 61,504	33.656 / 74,199	42.590 / 93,895
C	Overall width	mm/ft-in	3.190 / 10'6"	3.497 / 11'6"	3.824 / 12'7"
C <sub>1</sub>	Width (from console to right track)	mm/in	294 / 11.56" <sup>1)</sup>	285 / 11.22"	327 / 12.87"
	Weight	kg/lb	26.555 / 58,544	31.690 / 69,864	40.102 / 88,410
D	Overall width	mm/ft-in	2.896 / 9'6" <sup>1)</sup>	3.212 / 10'6"	3.497 / 11'6"
	Weight	kg/lb	26.084 / 57,505	31.023 / 68,394	39.219 / 86,463

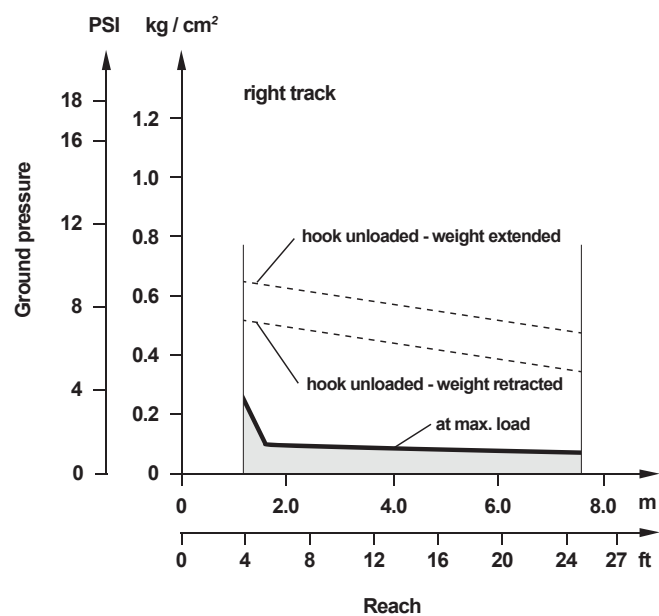
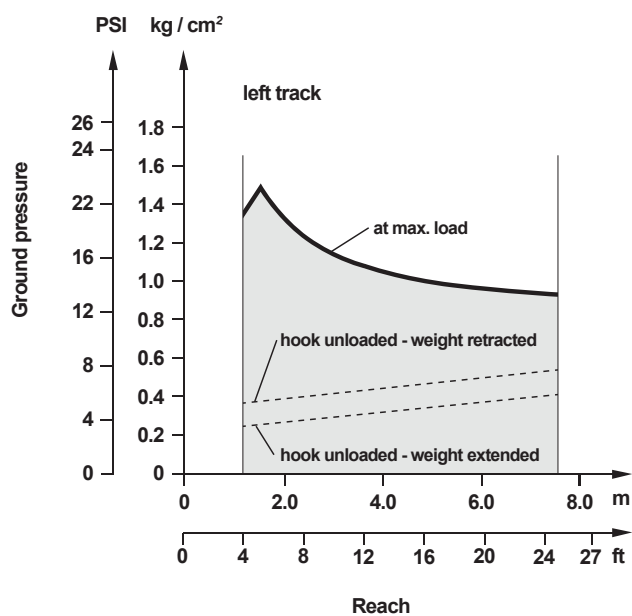
<sup>1)</sup> Track shoes with 711 mm / 28". Track shoes left optional with 914 mm / 36"; 2,997 mm / 9'10"



# LIFTING CAPACITY RL 26 (ISO 8813)

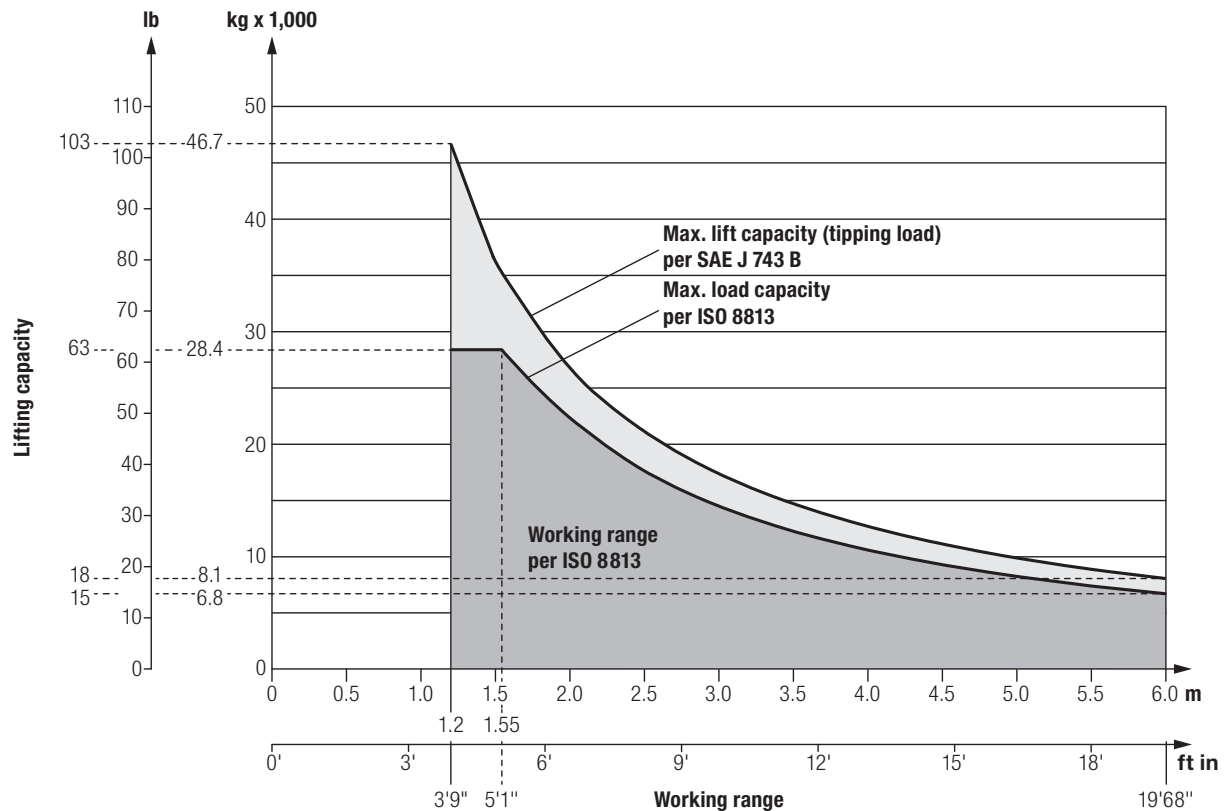


# GROUND PRESSURE RL 26 (ISO 8813)

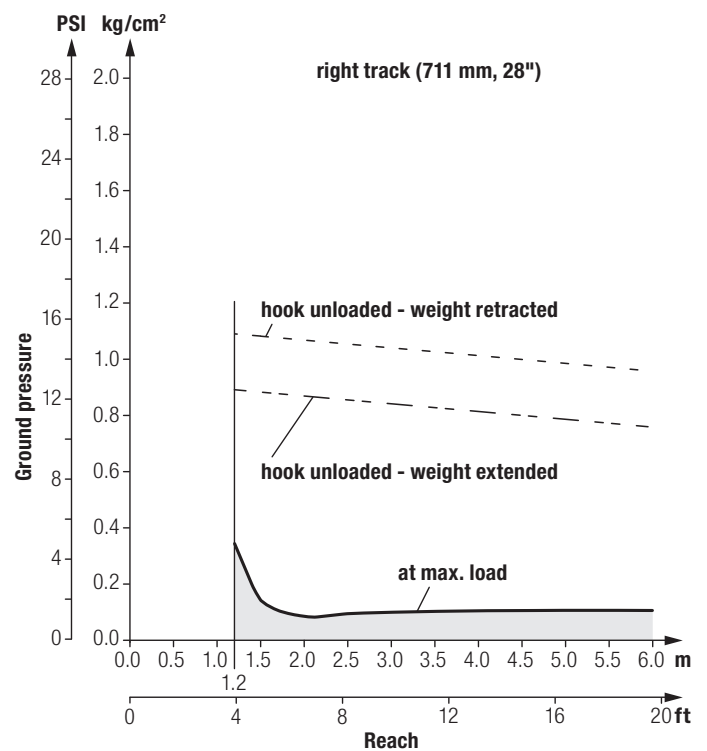
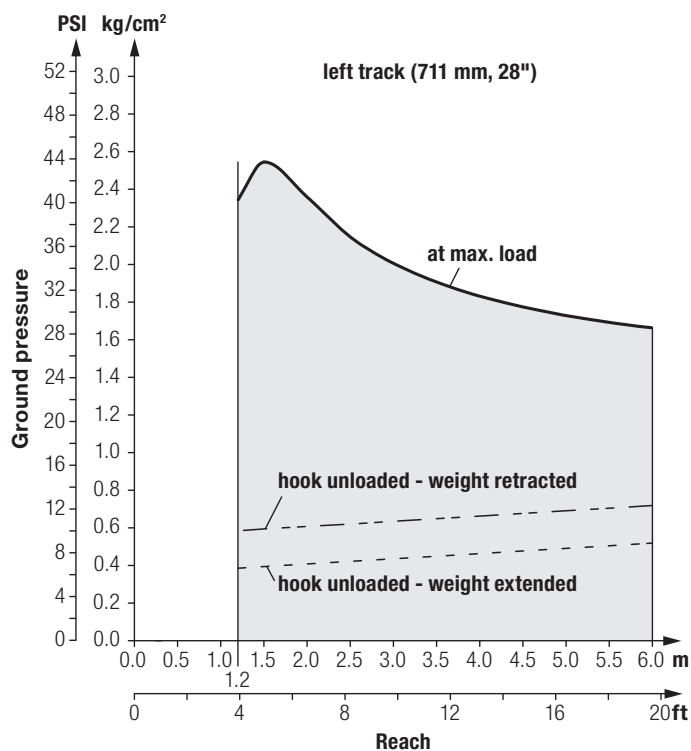


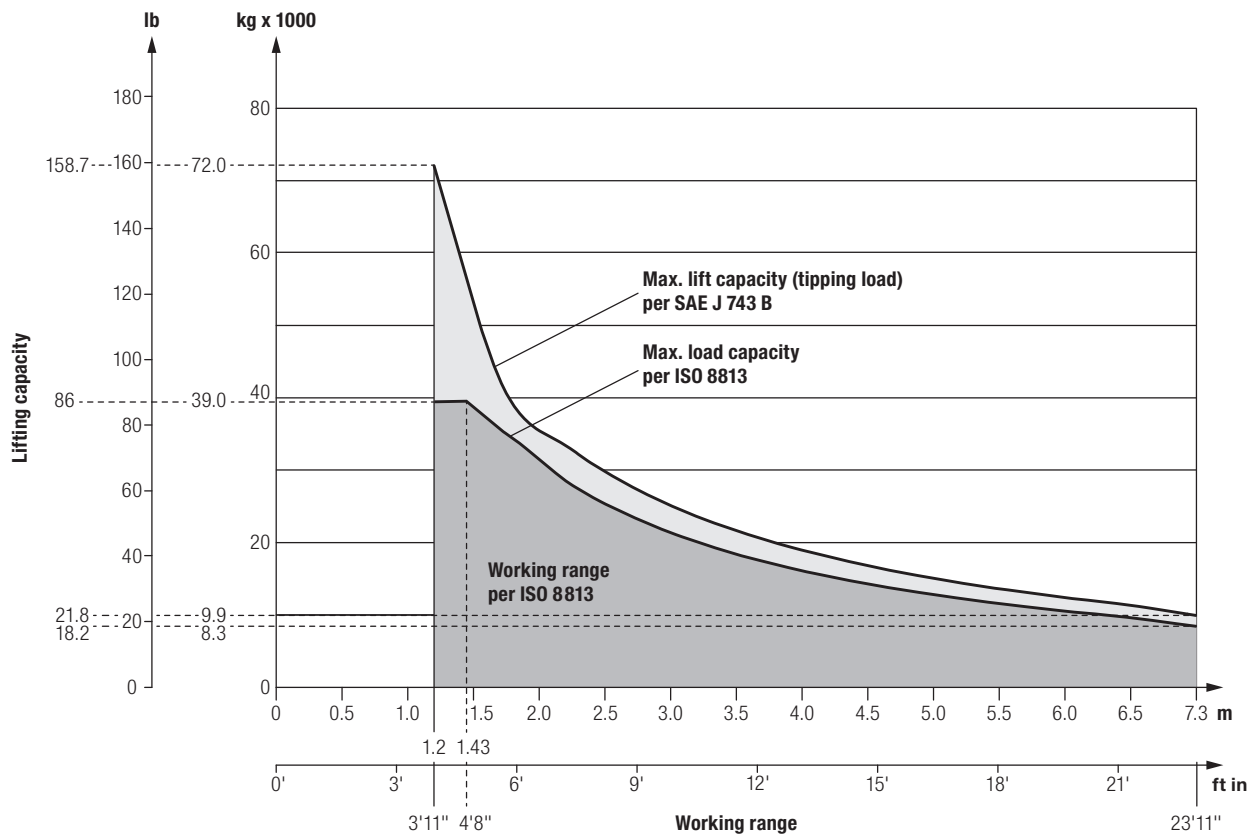


# LIFTING CAPACITY RL 46 (ISO 8813)

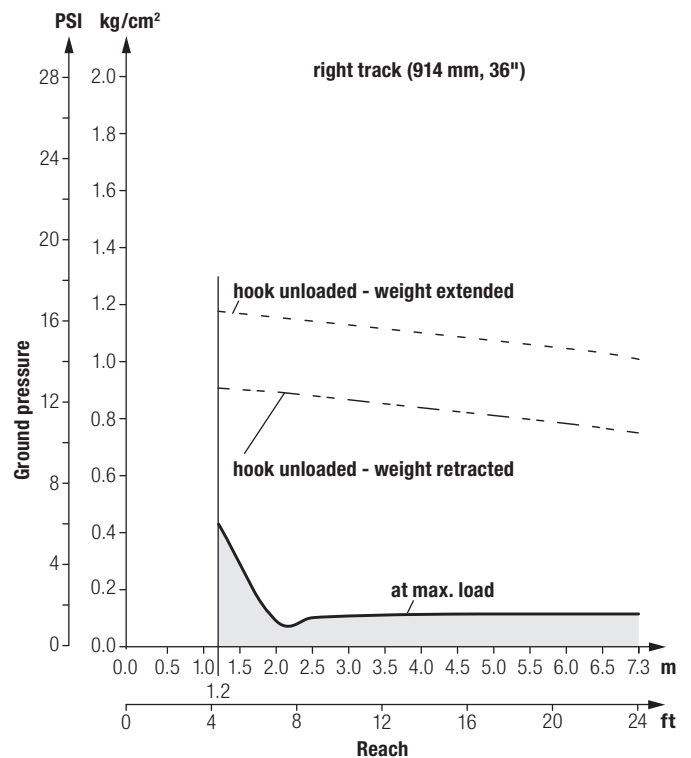
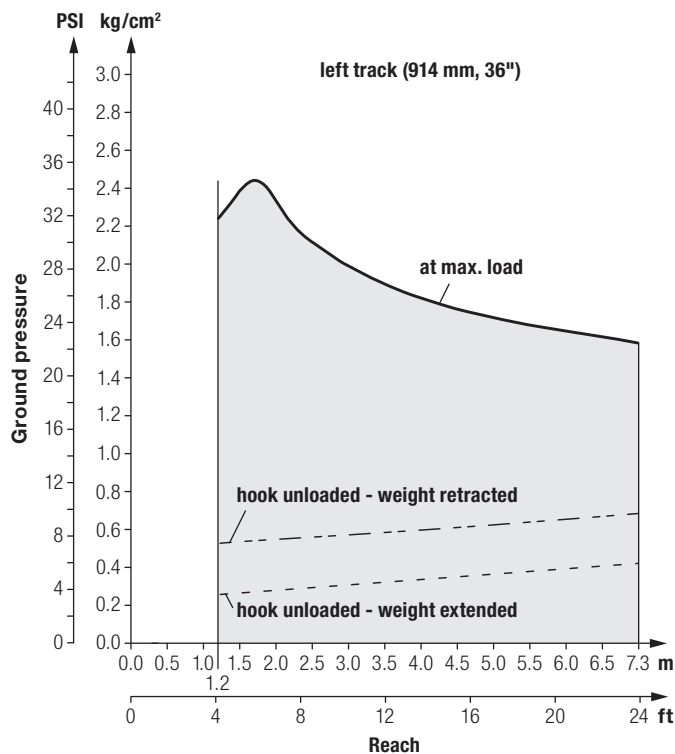


# GROUND PRESSURE RL 46 (ISO 8813)

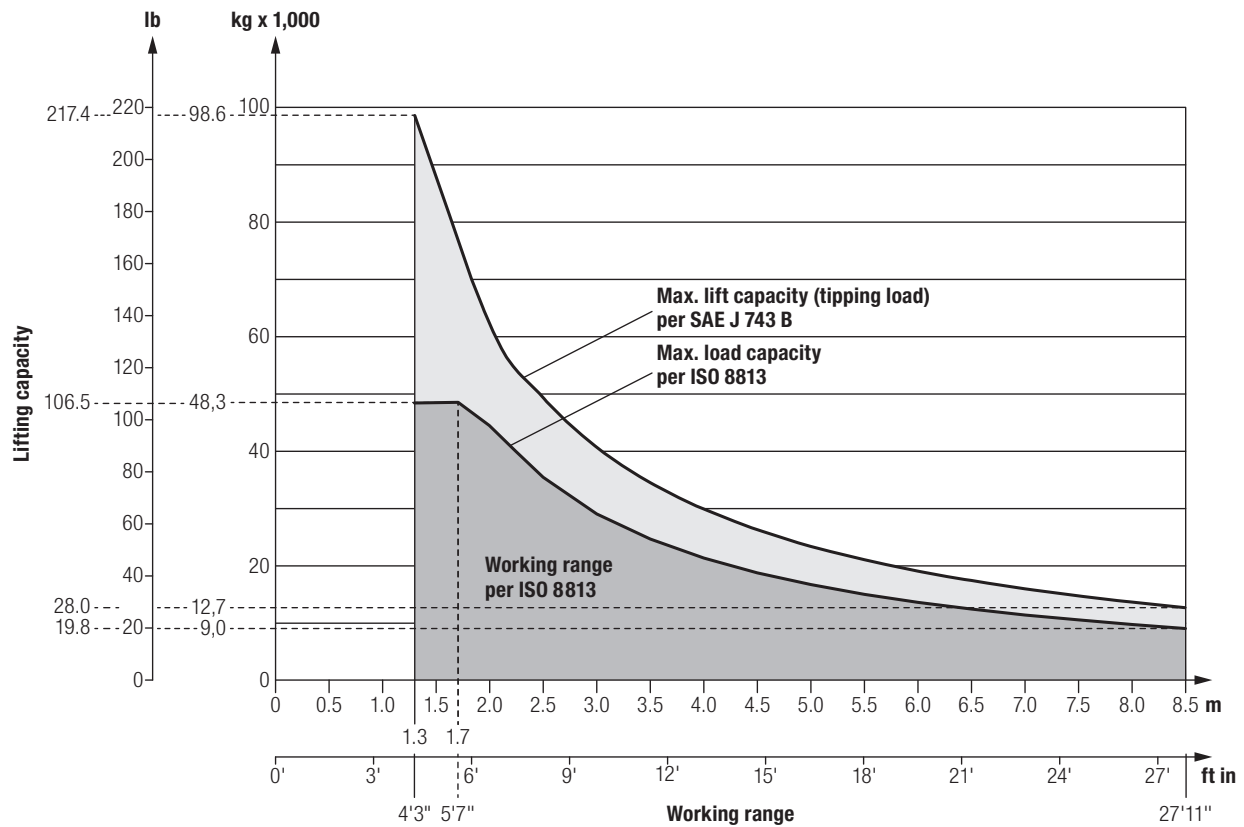




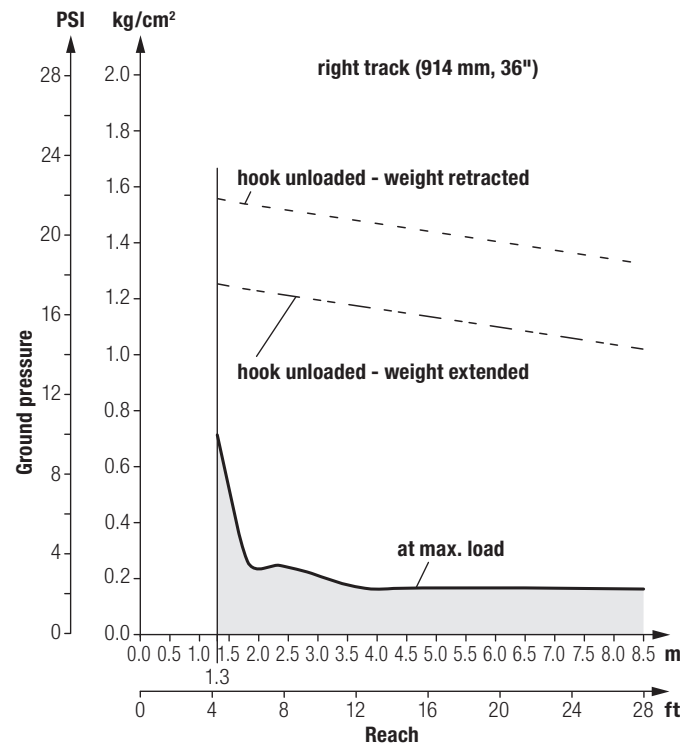
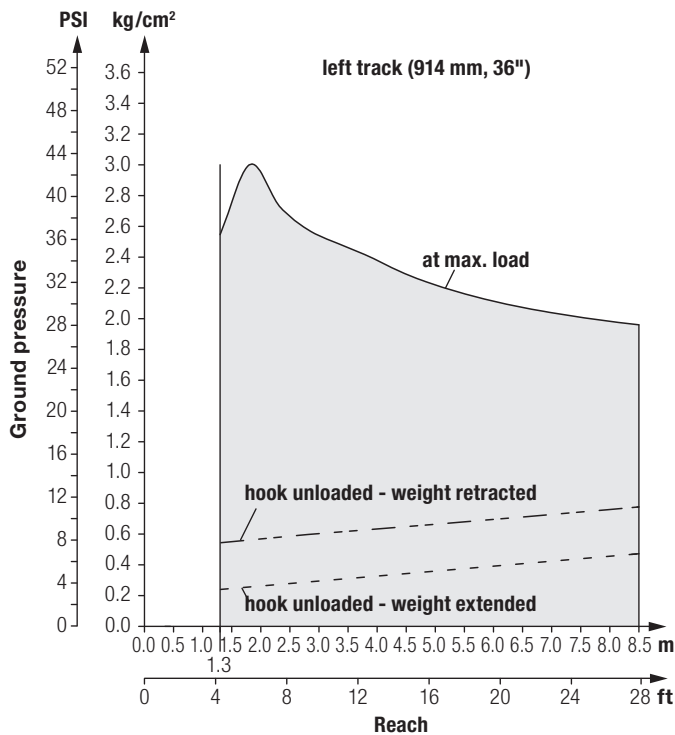
## GROUND PRESSURE RL 56 (ISO 8813)







## GROUND PRESSURE RL 66 (ISO 8813)



# EQUIPMENT

RL 26



## BASE MACHINE

Additional handle on fuel tank	+
Air filter, dry type, dual step, with pre-filter	•
Arctic oil	+
Auto idle	+
Automatic engine shut-off	+
Battery compartment, lockable	•
Cold environment arrangement	1)
Cooling fan, hinged (with tool)	•
Cooling fan, hydraulically driven	•
Cooling fan, reversible	+
Desert arrangement	+
Diesel Exhaust Fluid (DEF) tank, lockable	•
Diesel particulate filter	1)
Engine and battery preheating system	+
Engine compartment doors, lockable	•
Forestry arrangement	1)
Fuel pre-filter	•
Fuel pre-filter, with electric heater	+
Fuel pre-filter with water separator heated	+
Fuel water separator	•
Grade control ready kit	+
Hydraulic oil level control	+
Hydraulic oil Liebherr Hydraulic Basic 100	+
Insulation battery container	+
LiDAT - Data transmission system	•
Liebherr diesel engine emission stage IV/Tier 4f	•
Liebherr hydraulic oil, biologically degradable	+
Lifting eyes for crane lifting, front	•
Radiator guard, hinged (with tool)	•
Radiator, wide-meshed	•
Refuelling pump, electric	+
Spade with mounting bracket	+
Special paint scheme	+
Tool kit, extended	+
Tow hook front	•
Towing hitch rear	•



## OPERATOR'S CABIN

Air-conditioner	•
Armrests 3D adjustable	•
Cabin double glazing	+
Cabin heating	•
Coat hook	•
Dome light	•
Dust filter system pressurised	+
Fire extinguisher in the cab	+
Footrest on the right side of the front console	+
Grab handles at joysticks	+
Operator's seat Comfort, air-suspended	•
Operator's seat Premium, air-suspended	+
Pressurised cab	•
Protective grid, rear window	+
Radio	+
Radio preparation kit	+
Rear-mounted mirror	+
Rear-view camera	+
Rear-view mirror, inside	•
Rear-view mirrors, external	+
ROPS integrated	•
Safety glass tinted	•
Sliding window left	+
Sliding window right	+
Socket 12 V	•
Storage nets	+
Stowage compartment, air-conditioned	•
Sunblind, front	+
Touch-controlled color display	•
Windshield washer system	•
Windshield wipers front, rear, doors, with intermittent function	•



## UNDERCARRIAGE

Master link, two-piece	•
Sprocket segments with recesses	1)
Sprocket segments, bolted	•
Track guard, full length	+
Track guide, centre part	•
Track guide, front and rear	•
Track pads with mud holes 2)	+
Track shoes, moderate service	•
Tracks, oil-lubricated	•
Undercarriage LGP	•
Undercarriage with rotary bushings FTB 2)	+



## ATTACHMENTS

Boom 7 m / 23 ft	•
Boom protection strips	+
Hoist cable special length	+
Boom extension (Jib)	+
2700mm / 8ft 11in - 1500 kg / 3300 lb	
Extendable counterweight	•
Hydraulic PTO for powering external equipment	•



## TRAVEL DRIVE

Emergency stop	•
Final drives planetary gear	•
Inch brake pedal	+
Load limit control, electronic	•
Parking brake, automatic	•
Seat contract switch	•
Travel control, 3 speed ranges	•
Travel drive joystick, detented	+
Travel drive joystick, proportional	•
Travel drive, hydrostatic	•



## ELECTRICAL SYSTEM

2 additional working lights on the cab, rear	+
2 cold start batteries	•
2 working lights on the cab, rear	•
4 working lights on the cab, front	•
All working lights in LED version	+
Beacon amber	+
Back-up alarm	+
Back-up alarm, acoustic and visual	+
Back-up alarm, switchable	+
Battery main switch	•
Battery main switch, lockable	+
Horn	•
Immobiliser, electronic	+
On-board voltage 24 V	•



## HYDRAULIC SYSTEM

Hydraulic control counterweight	•
Hydraulic control winch and boom	•
Variable flow pump, load sensing	•
Oil filter with strainer in hydraulic tank	•
Free fall device	•
Hydraulic servo control	•
Control valve for 1 circuit	+
Hydraulic tank oil level control	+
Oil cooler	•



## ATTACHMENTS REAR

Counterweight, rear (1,000 kg / 2,205 lb)	+
Drawbar rear, rigid	+
Mounting plate for third-party equipment	1)
Rear winch	+
Weld platform	+

• = standard  
+ = option

1) = On demand at your dealer/Maats

2) = Available track shoes on demand

Options and/or special attachments, supplied by vendors other than Maats, are only to be installed with the knowledge and approval of Maats to retain warranty.



# EQUIPMENT

RL 46 - RL 56 - RL 66

# MAATS®

PIPELINE PROFESSIONALS



## BASE MACHINE

RL46  
RL56  
RL66

Access ladder	•	•	•
Air pre-filter Sy-Klone®	+	+	+
Air pre-filter Top Air®	+	+	+
Automatic dust extraction	•	•	•
Battery cold-resistant	•	•	•
Battery container lockable	•	•	•
Battery master switch lockable	+	+	+
Certification Russian customs union	+	+	+
Data transmission interface (e.g. J1939)	1)	1)	1)
DEF tank lockable	•	•	•
Diesel tank lockable with condensate drain	•	•	•
Engine and battery preheating system	•	•	•
Engine compartment perforated and lockable	+	+	+
Engine emission stage IV / Tier 4f	•	•	•
Enlarged step for cab access	•	•	•
Extended tool kit	+	+	+
Fuel prefilter with water separator heated	+	+	+
Handels tank access additional	+	+	+
Hinged cooling fan front	+	+	+
Hinged cooling fan hydraulic oil rear	•	•	•
Hydraulic oil Liebherr HVI	•	•	•
Hydraulic oil Liebherr Hydraulic Basic 100	+	+	+
Hydraulic oil thermometer	+	+	+
Insulation battery container	+	+	+
Jump-start plug	+	+	+
LIDAT data transmission and fleet management system	1)	1)	1)
Lifting eyes rear	+	+	+
Lifting eyes front	•	•	•
Lifting eyes rear	+	+	+
Lubricants cold-resistant	+	+	+
Number plate bracket	+	+	+
Oil level indicator hydraulic oil	+	+	+
Packaging sea transport	+	+	+
Preservation sea transport	+	+	+
Refuelling pump	+	+	+
Reversible fan manually	1)	1)	1)
Spade bracket	1)	1)	1)
Special paint multi colour	1)	1)	1)
Special paint single colour	+	+	+
Tarpaulin engine compartment and cooler	+	+	+
Tow hook front	•	•	•
Warning mark GOST (Russia)	+	+	+



## OPERATOR'S CAB

RL46  
RL56  
RL66

Power plug 12 V	•	•	•
270° camera Sky View®	1)	1)	+
Acoustic back-up alarm (deactivatable)	+	+	+
Air Conditioning	•	•	•
Amber beacon	+	+	+
Armrests adjustable	•	•	•
Backrest extension	+	+	+
Blind front window	•	•	•
Blind roof window	1)	1)	1)
Auxiliary cab heating	1)	1)	1)
Cab double glazing	+	+	+
Cab with integrated ROPS	•	•	•
Deactivation of turning on the spot function	+	+	+
Emergency stop	•	•	•
Fire extinguisher	+	+	+
FOPS cab	1)	1)	1)
Free fall device winch	•	•	•
Headlights halogen	•	•	•
Headlights LED	1)	1)	1)
Hoist limit shutoff	•	•	•
Hoop guard travel control	1)	1)	1)
Hoop guard working hydraulics control	•	•	•
Immobilizer electronic	1)	1)	1)
Inch / brake pedal	1)	1)	1)
Individual settings of travel drive response	•	•	•
Joystick control	•	•	•
Liebherr LMB load moment limitation	+	+	+
Maximum travel speed limitation	+	+	+
(Open) seat belt alert	1)	1)	1)
Operator seat Comfort air-suspende	+	+	+
Operator seat Premium air-suspended	+	+	+
Operator seat Standard mechanical	•	•	•
Panorama mirror inside	•	•	•
Radio preparation	•	•	•
Radio standard	+	+	+
Rear view camera	1)	1)	1)
Right and left rear mirrors	+	+	+
Sliding window rear	1)	1)	1)
Sliding window right	+	+	+
Tilt-able cab	•	•	•
Touchscreen color display	•	•	•
Windshield wipers all round	•	•	•
Windshield wipers roof window	1)	1)	1)



## CONTROLS AND WARNING LIGHTS

RL46  
RL56  
RL66

Display engine coolant temperature	•	•	•
Display fuel level (digital)	•	•	•
Display travel speed ranges	•	•	•
Hydraulic oil thermometer	+	+	+
Indicator light air filter contamination	•	•	•
Indicator light battery charge	•	•	•
Indicator light diesel engine	•	•	•
Indicator light hydraulic oil temperature	•	•	•
Indicator light oil filter contamination	•	•	•
Indicator light parking brake	•	•	•
Indicator light pump replenishing pressure	•	•	•
Oil level indicator hydraulic oil	+	+	+
Operating hours counter (digital)	•	•	•



## ATTACHMENTS

RL46  
RL56  
RL66

Boom 6.000mm / 19'8"	•	-	-
Boom 7.300mm / 23'11"	-	•	-
Boom 7.320mm / 24'	+	-	-
Boom 8.500mm / 27'11"	-	+	•
Boom 10.500mm / 34'5"	-	-	+
Counterweight cold-resistant	+	+	+
Rigid drawbar	+	+	+
Hoist limit shutoff	•	•	•
Hoist cable special length	+	+	+
Hydraulic attachment kit other equipment	1)	1)	1)
Hydraulic attachment kit pipefacing	+	+	+
Hydraulic winch load hook	•	•	•
Lifting cylinder cold-resistant	+	+	+
Mounting plate external equipment	1)	1)	1)
Towing hitch rear	•	•	•
Winch rear	1)	1)	1)
Pipe protection strips on boom	+	+	+



## TRAVEL DRIVE

RL46  
RL56  
RL66

3 travel speed ranges	•	•	•
Automatic parking brake	•	•	•
Electronic load limit control	•	•	•
Hydrostatic travel drive	•	•	•
Oil cooler	•	•	•
Planetary gear final drives	•	•	•



## ELECTRICAL SYSTEM

RL46  
RL56  
RL66

Alternator 140 A	•	•	•
Board voltage 24 V	•	•	•
Cold start batteries 2-4 pieces	•	•	•
Working light right 1 piece	•	•	•
Working lights front 2 pieces	•	•	•
Working lights left 3 pieces	•	•	•
Working lights rear 2 pieces	•	•	•



## UNDERCARRIAGE

RL46  
RL56  
RL66

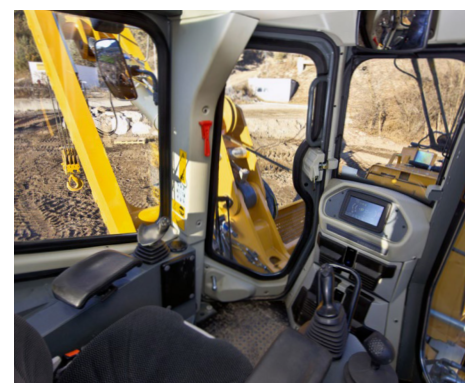
Center track guide	+	+	+
Chain master link two-part	•	•	•
Sprocket segments bolted	•	•	•
Track frame closed	•	•	•
Track shoes 710 mm single grouser chamfered	•	-	-
Track shoes 914 mm single grouser chamfered	+	•	•
Track shoes 914 mm single grouser flat	+	+	+
Undercarriage components cold-resistant	•	•	•



## HYDRAULIC SYSTEM

RL46  
RL56  
RL66

Pipe rupture protection	•	•	•
Oil filter in hydraulic tank	•	•	•
Variable flow pump, load sensing	•	•	•



• = standard  
+ = options

1) On demand

Options and/or special attachments, supplied by vendors other than Maats, are only to be installed with the knowledge and approval of Maats to retain warranty.



# PIPELINE EQUIPMENT

Maats focuses on sales and rental of new and used high quality equipment for the construction of pipelines with all common diameters. Rental and sales of pipeline equipment is mainly Maats and Liebherr equipment. Check our website for all available equipment and brands.







LAYING · BENDING · INTERNAL BENDING  
WELDING · VARIOUS · COMPONENTS







## MAATS PIPELINE PROFESSIONALS

Maats manufactures, sells and rents out high quality equipment for the construction of pipelines with all common diameters from 6 up to 60 inches. With branch offices in Indonesia (PT. Maats), partnerships in Algeria (Maats Afrique) and Turkey (Maats Insaat) and a close cooperation with the global network of Liebherr companies, Maats' presence is truly global.

### THE NETHERLANDS HEAD OFFICE

Breukersweg 4  
7471 ST Goor  
the Netherlands  
P.O.Box 165  
7470 AD Goor  
the Netherlands  
T: +31 (0)547 260 000  
F: +31 (0)547 261 000  
E: [info@maats.com](mailto:info@maats.com)

### INDONESIA SUBSIDIARY OFFICE

Talavera Office Suite  
18th floor  
JL. T.B. Simatupang  
Kav. 22-26  
12430 Jakarta  
Indonesia  
T: +62 (0)212 971 5936  
E: [info@maats.com](mailto:info@maats.com)

### INDONESIA SUBSIDIARY WORKSHOP

Kawasan Industri Sekupang  
Makmur  
Abadi E4 No. 1  
JL. R.E. Martadinata  
Tanjung Pinggir, Sekupang  
29428 Batam  
Indonesia  
T: +62 (0)778 326 526  
F: +62 (0)778 326 576  
E: [info@maats.com](mailto:info@maats.com)

**STRENGTH,  
PERFORMANCE  
& RELIABILITY  
UNDER ALL  
CIRCUMSTANCES.  
READY FOR  
FUTURE CHALLENGES**

**MAATS®.COM**